

# Epic™ Contour Molar Bands

- Superior Tooth Design Adapts to Anatomical Contours
- 33 Proportional Graduated Full Sizes in Both Uppers & Lower – Numbered 3-36
- Regular Temper
- Malleability with Excellent Adaptation
- Easy to Recontour
- Accurate Right and Left Occlusal/Gingival Tooth Anatomy
- Available with Micro-Etched Interiors for Maximum Retention



Maxillary Lingual Indent for a More Precise Fit!

## Epic™ Contour Band Kits Whole Sizes 3 through 36

All Band Kits can be ordered as Loose Bands or Prewelded Assemblies.

Band Coding: Legibly marked on mesial side: "U" indicates Upper; "L" indicates Lower; "S" indicates 2nd Molar; "R" indicates Right; "L" indicates Left. (for instant identification, an asterisk \* is marked after the size of each Epic Band)

### Starter Kit

BAND SIZE	3	4	5	6	7	8	9	10	11	12	13	14	15	16	17	18	19	20	21	22	23	24	25	26	27	28	29	30	31	32	33	34	35	36	TOTAL	
Upper or Lower R										1	1	2	2	2	2	2	2	2	2	2	2	2	1	1	1											25
1st or 2nd Molar L										1	1	2	2	2	2	2	2	2	2	2	2	2	1	1	1											25

### Introductory Kit

BAND SIZE	3	4	5	6	7	8	9	10	11	12	13	14	15	16	17	18	19	20	21	22	23	24	25	26	27	28	29	30	31	32	33	34	35	36	TOTAL		
Full Range Upper or Lower R	1	1	1	1	1	1	1	1	1	1	2	2	2	2	2	2	2	2	2	2	2	2	2	2	2	2	1	1	1	1	1	1	1	1	1	1	50
1st or 2nd Molar L	1	1	1	1	1	1	1	1	1	1	2	2	2	2	2	2	2	2	2	2	2	2	2	2	2	2	1	1	1	1	1	1	1	1	1	1	50
Mid-Range Upper or Lower R											2	3	4	4	4	4	4	4	4	4	4	4	3	2													50
1st or 2nd Molar L											2	3	4	4	4	4	4	4	4	4	4	4	3	2													50

### Professional Kit

BAND SIZE	3	4	5	6	7	8	9	10	11	12	13	14	15	16	17	18	19	20	21	22	23	24	25	26	27	28	29	30	31	32	33	34	35	36	TOTAL			
Full Range Upper or Lower R	1	1	1	1	1	1	2	2	2	3	3	3	3	3	4	4	4	4	4	4	3	3	3	3	3	2	2	2	1	1	1	1	1	1	1	1	75	
1st or 2nd Molar L	1	1	1	1	1	1	2	2	2	3	3	3	3	3	4	4	4	4	4	4	3	3	3	3	3	2	2	2	1	1	1	1	1	1	1	1	75	
Mid-Range Upper or Lower R										3	4	6	6	6	6	6	6	6	6	6	6	6	4	4														75
1st or 2nd Molar L										3	4	6	6	6	6	6	6	6	6	6	6	6	4	4														75

### Master Kit

BAND SIZE	3	4	5	6	7	8	9	10	11	12	13	14	15	16	17	18	19	20	21	22	23	24	25	26	27	28	29	30	31	32	33	34	35	36	TOTAL			
Full Range Upper or Lower R	2	2	2	2	2	3	3	4	4	4	7	7	7	7	7	7	7	7	7	7	7	7	7	4	4	4	4	3	3	3	2	2	2	2	2	2	150	
1st or 2nd Molar L	2	2	2	2	2	3	3	4	4	4	7	7	7	7	7	7	7	7	7	7	7	7	7	4	4	4	4	3	3	3	2	2	2	2	2	2	150	
Mid-Range Upper or Lower R										10	10	11	11	11	11	11	11	11	11	11	11	11	10	10														150
1st or 2nd Molar L										10	10	11	11	11	11	11	11	11	11	11	11	11	10	10														150

### Leatherette Band Cases and Trays

Attractive cases for storing and dispensing of bands and band assemblies. Silver with black type. These cases are easy to transport or stack for storage.



BAND CASE - 7" long x 11" wide x 1" tall.  
 Band Case with Band type on sides  
 (Epic™/Tempra™) • 482-024  
 Bicuspid Band Case with Logo Only • 482-026

BAND TRAY WITH COVER  
 (cover ordered separately)  
 Epic™ Band Tray • 482-011 Cover • 482-012  
 Tempra™ Band Tray • 482-018 Cover • 482-017

# Tempra™ Molar Bands

- Superior Tooth Morphology
- Full Tempered
- Memory & Elasticity Maintained After Prefit and Removal
- Proportional Graduated Half-Sizing, Numbered 29-1/2 – 44
- Increased Occlusal Edge Strength to Prevent Deformation
- Stiffer Material to Withstand Additional Pressure of Extra and Intraoral Appliances
- Available with Micro-Etched Interiors for Maximum Retention



## Tempra™ Band Kits Half sizes 29-1/2 through 44

All Band Kits can be ordered as Loose Bands or Prewelded Assemblies.

Band Coding: Legibly marked on mesial side: "U" indicates Upper; "L" indicates Lower; "S" indicates 2nd Molar; "R" indicates Right; "L" indicates Left.

### Starter Kit

BAND SIZE	29-1/2	30	30-1/2	31	31-1/2	32	32-1/2	33	33-1/2	34	34-1/2	35	35-1/2	36	36-1/2	37	37-1/2	38	38-1/2	39	39-1/2	40	40-1/2	41	41-1/2	42	42-1/2	43	43-1/2	44	TOTAL
Upper or Lower R							1	1	2	2	2	2	2	2	2	2	2	2	1	1	1										25
1st or 2nd Molar L							1	1	2	2	2	2	2	2	2	2	2	2	1	1	1										25

### Introductory Kit

BAND SIZE	29-1/2	30	30-1/2	31	31-1/2	32	32-1/2	33	33-1/2	34	34-1/2	35	35-1/2	36	36-1/2	37	37-1/2	38	38-1/2	39	39-1/2	40	40-1/2	41	41-1/2	42	42-1/2	43	43-1/2	44	TOTAL
Full Range Upper or Lower R	1	1	1	1	1	2	2	2	2	2	2	2	3	3	3	2	2	2	2	2	2	2	1	1	1	1	1	1	1	1	50
1st or 2nd Molar L	1	1	1	1	1	2	2	2	2	2	2	2	3	3	3	2	2	2	2	2	2	2	1	1	1	1	1	1	1	1	50
Mid-Range Upper or Lower R									4	4	4	4	4	5	5	4	4	4	4												50
1st or 2nd Molar L									4	4	4	4	4	5	5	4	4	4	4												50

### Professional Kit

BAND SIZE	29-1/2	30	30-1/2	31	31-1/2	32	32-1/2	33	33-1/2	34	34-1/2	35	35-1/2	36	36-1/2	37	37-1/2	38	38-1/2	39	39-1/2	40	40-1/2	41	41-1/2	42	42-1/2	43	43-1/2	44	TOTAL	
Full Range Upper or Lower R	1	1	1	1	2	2	2	3	4	4	4	4	5	5	5	4	4	4	4	3	2	2	1	1	1	1	1	1	1	1	75	
1st or 2nd Molar L	1	1	1	1	2	2	2	3	4	4	4	4	5	5	5	4	4	4	4	3	2	2	1	1	1	1	1	1	1	1	75	
Mid-Range Upper or Lower R								6	6	6	6	6	7	7	7	6	6	6	6													75
1st or 2nd Molar L								6	6	6	6	6	7	7	7	6	6	6	6													75

### Master Kit

BAND SIZE	29-1/2	30	30-1/2	31	31-1/2	32	32-1/2	33	33-1/2	34	34-1/2	35	35-1/2	36	36-1/2	37	37-1/2	38	38-1/2	39	39-1/2	40	40-1/2	41	41-1/2	42	42-1/2	43	43-1/2	44	TOTAL	
Full Range Upper or Lower R	2	2	3	3	3	4	4	7	7	9	9	9	9	9	9	9	7	7	7	4	4	3	3	3	2	2	2	2	2	2	150	
1st or 2nd Molar L	2	2	3	3	3	4	4	7	7	9	9	9	9	9	9	9	7	7	7	4	4	3	3	3	2	2	2	2	2	2	150	
Mid-Range Upper or Lower R								12	12	12	12	12	14	14	14	12	12	12														150
1st or 2nd Molar L								12	12	12	12	12	14	14	14	12	12	12														150

## General Purpose Primary Molar Bands

9 sizes, 25 through 30-1/2. Universal Left or Right. Available in Starter Kits, Prewelded or as Individual Bands. Permanent size marking. May be prewelded with mini second molar tube, cleat, button or seating lug.



### Starter Kit

Size	25	26	27	28	28-1/2	29	29-1/2	30	30-1/2	TOTAL
Quantity	4	5	5	5	5	4	4	4	4	40

Primary Dentition Starter Kit • 799-321  
 20 each: .022 Mini Edgewise (lower anterior brackets that can be used on upper and lower centrals, laterals and cuspids) and 36 each: Upper and Lower Primary Bands with Standard Mini 2nd Molar Tubes.

# Bicuspid Bands

- Permanent Size Marking
- Anatomically Contoured
- Full Tempered
- Enhanced Retention



To Order Kits:  
Specify kit type:  
Introductory (100 bands),  
Professional (150 bands),  
or Master (300 bands)

Specify size range:  
Full Range or Mid-range.

All Band Kits can be  
ordered as Loose Bands  
or Prewelded Assemblies.

To Order Individual Bands:  
Specify tooth type, left or  
right, size number and  
quantity.

## Maxillary Bicuspid Kits

Extended Size Range: SIZE 1 THROUGH SIZE 24

NON RIGHT/LEFT • MARKED U1 through U24

### Full Range Kit

BAND SIZE		1	2	3	4	5	6	7	8	9	10	11	12	13	14	15	16	17	18	19	20	21	22	23	24	TOTAL	
Introductory Kit	R	1	1	1	1	1	2	2	2	3	3	4	4	4	4	3	3	2	2	2	1	1	1	1	1	1	50
	L	1	1	1	1	1	2	2	2	3	3	4	4	4	4	3	3	2	2	2	1	1	1	1	1	1	50
Professional Kit	R	2	2	2	2	2	3	3	4	4	4	4	5	5	5	4	4	4	3	3	2	2	2	2	2	2	75
	L	2	2	2	2	2	3	3	4	4	4	4	5	5	5	4	4	4	3	3	2	2	2	2	2	2	75
Master Kit	R	3	3	3	4	5	6	6	9	9	9	9	9	9	9	9	9	9	6	6	5	4	3	3	3	150	
	L	3	3	3	4	5	6	6	9	9	9	9	9	9	9	9	9	9	6	6	5	4	3	3	3	150	

### Mid-Range Kit

BAND SIZE		1	2	3	4	5	6	7	8	9	10	11	12	13	14	15	16	17	18	19	20	21	22	23	24	TOTAL	
Introductory Kit	R							4	4	4	4	4	5	5	4	4	4	4									50
	L							4	4	4	4	4	5	5	4	4	4	4									50
Professional Kit	R							6	6	6	6	6	7	7	7	6	6	6	6								75
	L							6	6	6	6	6	7	7	7	6	6	6	6								75
Master Kit	R							12	12	12	12	12	14	14	14	12	12	12	12								150
	L							12	12	12	12	12	14	14	14	12	12	12	12								150

## Mandibular Bicuspid Kits

Extended Size Range: SIZE 3 THROUGH SIZE 26

NON RIGHT/LEFT • MARKED L3 through L26

### Full Range Kit

BAND SIZE		3	4	5	6	7	8	9	10	11	12	13	14	15	16	17	18	19	20	21	22	23	24	25	26	TOTAL	
Introductory Kit	R	1	1	1	1	1	2	2	2	3	3	4	4	4	4	3	3	2	2	2	1	1	1	1	1	1	50
	L	1	1	1	1	1	2	2	2	3	3	4	4	4	4	3	3	2	2	2	1	1	1	1	1	1	50
Professional Kit	R	2	2	2	2	2	3	3	3	3	5	5	5	5	5	4	4	4	3	3	2	2	2	2	2	2	75
	L	2	2	2	2	2	3	3	3	3	5	5	5	5	5	4	4	4	3	3	2	2	2	2	2	2	75
Master Kit	R	3	3	3	4	5	6	6	9	9	9	9	9	9	9	9	9	9	6	6	5	4	3	3	3	150	
	L	3	3	3	4	5	6	6	9	9	9	9	9	9	9	9	9	9	6	6	5	4	3	3	3	150	

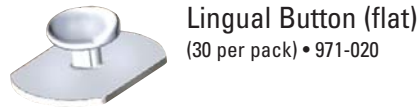
### Mid-Range Kit

BAND SIZE		3	4	5	6	7	8	9	10	11	12	13	14	15	16	17	18	19	20	21	22	23	24	25	26	TOTAL	
Introductory Kit	R							4	4	4	4	4	5	5	4	4	4	4									50
	L							4	4	4	4	4	5	5	4	4	4	4									50
Professional Kit	R							6	6	6	6	6	7	7	7	6	6	6	6								75
	L							6	6	6	6	6	7	7	7	6	6	6	6								75
Master Kit	R							12	12	12	12	12	14	14	14	12	12	12	12								150
	L							12	12	12	12	12	14	14	14	12	12	12	12								150

# Band and Bracket Auxiliaries

## Weldable Lingual Attachments for Band Assemblies

These lingual attachments can be welded to create band assemblies.



**Lingual Button (flat)**  
(30 per pack) • 971-020



**Lingual Button (curved)**  
(30 per pack) • 971-021



**Cuspid/Bicuspid Lingual Cleat**  
(100 per pack) • 971-024

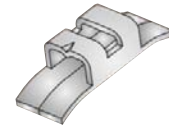


**Seating Lugs**  
(100 per pack)  
Bicuspids • 971-027  
Molars • 971-028

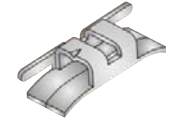


**Molar Lingual Cleat**  
(100 per pack) • 971-025

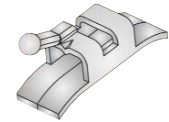
## Lingual Sheaths



.036 slotted, horizontal, latching indent. Fits left or right.  
(10 per pack)  
• 971-032



.036 slotted, horizontal, latching indent hook.  
(10 per pack)  
UR/LL • 971-034  
UL/LR • 971-035



.036 horizontal hook, slotted, latching indent.  
(10 per pack)  
UR/LL • 971-036  
UL/LR • 971-037



With vertical hooks.  
(10 per pack)  
UR/LL • 971-038  
UL/LR • 971-039

# Storage & Dispensers

## Pre-Packaged Chairside Dispensers



### Sliding Bracket Trays & Rack

Call for Pre-loaded Tray Pricing.  
Individual Sliding Bracket Trays.  
5/16" tall x 5" wide 2-5/8" deep.  
(10 per pack).

- Empty • 482-006
- Sliding Bracket Tray Rack • 482-006R



### Chairside Bracket Dispenser

Perfect for dispensing individual patient set-ups. Stores up to 10 cases of brackets. Limits handling and contamination.  
4-1/6" x 6-1/6" x 5/6" (brackets not included)  
(10 per pack) • 482-001



### Safe-T-Bracket Tray™

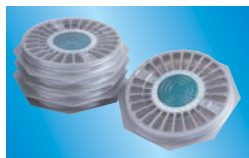
For single patient use. Excellent for transporting brackets to chairside. Adhesive circles hold one complete set-up of brackets and buccal tubes. 7-1/2" x 2-1/2" (brackets not included)  
(25 per pack) • 482-002



### Band Storage Cabinet

Holds band tray inserts, which can be easily removed for chairside use. Note: Molar trays not included. Trays can be purchased separately. (see below). 11-1/2" x 7-1/4" x 7-1/2"

- Cabinet (trays not included) • 482-016
- Bracket Tray (Cover • 482-014) • 482-013
- Epic™ Band Tray (Cover • 482-012) • 482-011
- Tempra™ Band Tray (Cover • 482-017) • 482-018
- Primary Molar Tray (Cover • 482-021) • 482-020



### Silver Carousel Bracket Trays

Silver with clear cover. Holds either 10 or 50 cases. Twist dial design reduces handling and contamination of brackets, which remain secure and easy to identify and access.

- Holds 10 cases (7" x 3/8") • 482-003S
- Holds 50 cases (6.25" x 5/8") • 482-005

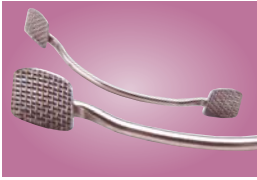
### Band or Bracket Leatherette Cases

Attractive cases for storage and dispensing of bands, band assemblies and brackets. Cases are silver.

7" long x 11" wide x 1" tall.

- Logo with Band Type on sides (Epic™/Tempra™) • 482-024
- Logo - Bracket • 482-025
- Logo - Bicuspid Bands • 482-026

# Direct Bond Lingual Attachments



## Bondable Retainers Lower Cuspid-to-Cuspid (3x3)

Made from heat treatable .032 wire and 80-gauge foil mesh pads for superior bond strength. May be fitted to study model or in some cases directly to patient.



Individual components (5 per pack):

22 mm • 433-022	28 mm • 433-028
24 mm • 433-024	30 mm • 433-030
26 mm • 433-026	

Kit • 433-000 (4 each of size in a convenient dispenser case: 20 total)



## Opti-MIM® Direct Bond Button

Nickel-Lite®. Single unit Metal Injection Molded and tailored to conform to tooth surface. Features Grip-LOK® base. (20 per pack) • 430-002



## Opti-MIM® Micro Direct Bond Lingual Button

Nickel-Lite®. Small size allows bonding in hard to access areas. Small radiused head ensures patient comfort and provides room to tie elastics or wires. Features Grip-LOK® base for greater bond strength. (10 per pack) • 430-001



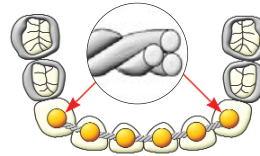
## Opti-MIM® Direct Bond Eyelet

This Nickel-Lite® eyelet can be easily bonded to any tooth. It offers better bond strength and a Grip-LOK® base. (10 per pack) • 430-005



## Opti-MIM® Direct Bond Eyelet with Chain

A great addition to a popular favorite, our eyelet is now available with a 1" length sterling silver chain that can be used full length or trimmed as needed. Strong and completely biocompatible, the chain links are big enough to thread power elastics through to provide traction in the desired direction to expose impacted teeth. (1 per pack) • 430-005C



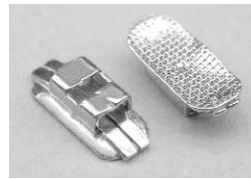
## Bondable Lingual Retainer Wire

Made of .032" stainless steel in tight twist which will not unravel when cut and facilitates bonding without end loops or bonding pads. Allows for long term stability with physiologic teeth movement. Bond any or all teeth in segment. 7" straight lengths. (20 per pack) • 433-040



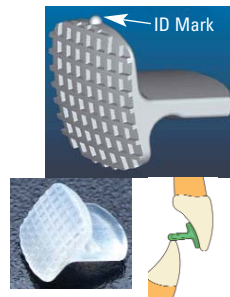
## Direct Bond Lingual Cleat

Low-profile design with smooth ball hooks easily adjusted for elastic placement or other treatment purposes. (20 per pack) • 430-004



## Direct Bond Lingual Sheath

Foil mesh pad, bonds directly to molars. .036 slotted, horizontal, latching indent. Fits left or right. (10 per pack) • 971-032DB



## Opti-MIM® Bite Guide™

One-piece unit which bonds directly to lingual side of the upper centrals to efficiently open a deep bite and/or advance the mandible. Simply reverse unit with respect to the ID mark for appropriate use. (10 per pack)

Stainless Steel	• 430-006
Composite	• 430-007



## Composite Direct Bond Button

Esthetically pleasing button is smooth and radiused for enhanced patient comfort. Durable and stain resistant, the base is curved for an anatomical fit with dove-tailed grooves on base for secure mechanical bond. Bond with any bonding adhesive with no extra primer necessary. (10 per pack) • 430-000